

# How to Pour Resin Molds

## By Heather Cutting-Rayl



Always assemble all of your materials, once you get going, you don't want to stop to go looking for something you forgot!

I always work on a glass mat, but you can cover your surface with wax paper or freezer paper.

Clean hands are a must!

### Supplies Needed

- Amazing Casting Resin
- Plastic cups
- Stir sticks
- Pen
- Scale (optional)
- Wax paper, or glass surface to work on

A scale is not required to make good resin casts. Once you start making casts and see how easy it is, it gets addicting! I highly recommend buying a scale! I bought my scale at Walmart for around \$30 in the kitchenware department. It is digital and runs on batteries. I have been using it for 3 years and have used hundreds of times! What have I cast? Well... All of the windows in both castles are cast resin, the original came from a plastic castle!



### Casting Without a Scale

You will need 3 small plastic cups. The kit comes with 2 sets, but they are not reusable!

Mark each cup in the same place with an easy to see mark at least an inch long.

The resin comes in 2 parts. You will mix equal amounts of Part A and Part B together. It is very important to get exact quantities of each part! Too much of one or another and the resin won't set right!

You can buy these small cups in lots of places, or any plastic cups will do. Mark each cup in the same place with a line that is easy to see. You have plenty of time to make the parts match. It's only when you combine them that the clock starts running!



Here is a better picture of the marked cups.

Make sure the parts do not touch until you are ready to mix them!

I keep the bottles on opposite side of my work table.

I always work in small quantities. The resin sets up so quickly, you don't have time to pour many molds at one time before it starts to set. You can, however, make one larger mold.

**Note:** If you "under pour" a mold, you can always add more resin! Better to under pour than have resin running all over the place!

I always work on a glass mat, the resin will try and will come right off!

See Below for mixing directions!



### Preparing the Resin using a Scale

If you are going to make more than a few resin pieces, I highly recommend buying a scale! You are using such minute amounts of resin in some molds, you will save money by measuring accurately.

For this method you do not need to mark the cups. Place one cup on the scale and pour in the amount you need. Remove cup, clear scale back to zero and put second cup on scale. Fill with Part B to same measurement as Part A.

I use measurements as small as 1/8 oz which is almost impossible to do without a scale!



### How Much Resin Do I Make?

This is a guesstimate and comes from experience. Remember, you are mixing 2 parts! I have been known to make twice too much on my first run through!

If you are going to be making more than one item,, make notes so you know how much resin you used.

I know that I need 1/4 oz to fill the 2 window molds for the castle., and 1/8 oz for my skull molds.

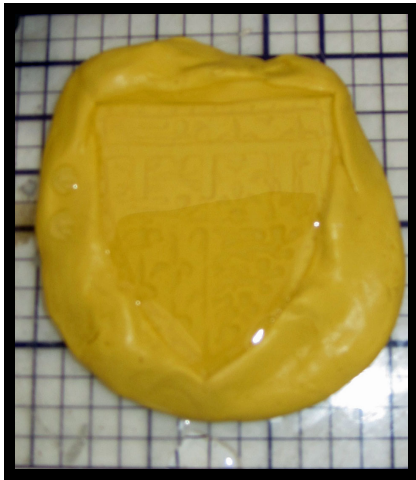
## Mixing the Resin

Once you have measure the resin into the 2 cups (by eye or scale) you are ready to mix the resin. Have everything ready! This is a very quick process and you can not stop to look for anything!

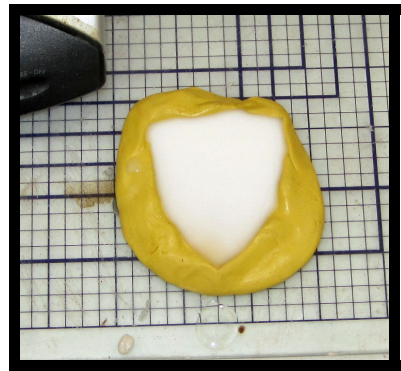
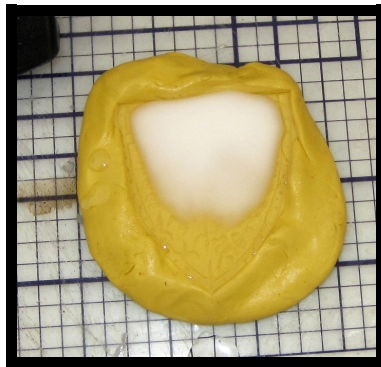
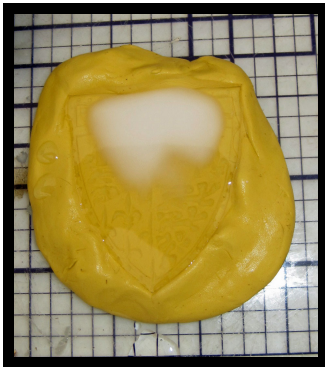
You should have already prepared: A mixing cup and stir stick and clean molds on wax paper or glass mat.

Start by pouring Part A into the mixing cup, followed by Part B. Mix thoroughly until all streaks are gone, scraping the sides and bottom. The mixture will start to feel warm. This should take about 30 seconds or so. Start pouring into your molds, pouring at the lowest point and allowing the mold to fill. Be careful, the liquid is clear and it is very easy to over fill the molds!

Immediately dispose of mixing cups and stir sticks in an appropriate container.



Freshly poured mold



It takes 1-2 minutes for the resin to set up in the mold. Here, I am showing several steps of the setup process from the clear resin through the hardening phase.





5 minutes later, a finished product!

Unfortunately, you can't see the detail very well in the photo!

Molds are not perfect, some clean up is usually required. I recommend that you do this as quickly as possible after you remove it from the mold, when the resin is still somewhat soft! An Exacto blade will clean up any overhangs quite nicely.



The resin dries very hard. If you don't clean it up before it dries, it is harder to work with. You can still use an exacto knife and sandpaper, but it is very time consuming.

I use my favorite tool, the Dremel Stylus, to sand down over pours or rough edges. You could use any Dremel tool with the sanding bit to do the job.

The Dremel Stylus is a fantastic tool for miniaturists! It takes all of the Dremel bits with no problems and fits in your hand! It's cordless and recharges very quickly. I use it almost every day.



## Finished!

I hope you can see the detail in this picture. I painted it a dark silver with black accents. It looks very dark here.

### Which one is the original?

If you guessed the one on the right, you would be right!

I hope this tutorial was helpful. If you have any questions, please feel free to e-mail me at [hcrsold@aol.com](mailto:hcrsold@aol.com). Please put resin tutorial in the subject line!